



# GPR139 Polyclonal Antibody

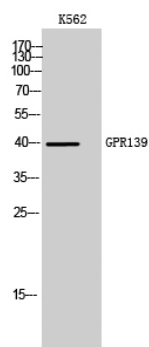
|                                  |   |
|----------------------------------|---|
| <b>Catalog No</b>                | YP-Ab-13300   |
| <b>Isotype</b>                   | IgG   |
| <b>Reactivity</b>                | Human;Mouse;Rat   |
| <b>Applications</b>              | WB;IF;ELISA   |
| <b>Gene Name</b>                 | GPR139  |
| <b>Protein Name</b>              | Probable G-protein coupled receptor 139   |
| <b>Immunogen</b>                 | The antiserum was produced against synthesized peptide derived from human GPR139. AA range:181-230  |
| <b>Specificity</b>               | GPR139 Polyclonal Antibody detects endogenous levels of GPR139 protein.   |
| <b>Formulation</b>               | Liquid in PBS containing 50% glycerol, 0.5% BSA and 0.02% sodium azide.   |
| <b>Source</b>                    | Polyclonal, Rabbit,IgG  |
| <b>Purification</b>              | The antibody was affinity-purified from rabbit antiserum by affinity-chromatography using epitope-specific immunogen.   |
| <b>Dilution</b>                  | Western Blot: 1/500 - 1/2000. Immunofluorescence: 1/200 - 1/1000. ELISA: 1/5000. Not yet tested in other applications.  |
| <b>Concentration</b>             | 1 mg/ml   |
| <b>Purity</b>                    | ≥90%  |
| <b>Storage Stability</b>         | -20°C/1 year  |
| <b>Synonyms</b>                  | GPR139; GPRG1; PGR3; Probable G-protein coupled receptor 139; G(q)-coupled orphan receptor GPRg1; G-protein-coupled receptor PGR3   |
| <b>Observed Band</b>             | 40kD  |
| <b>Cell Pathway</b>              | Cell membrane; Multi-pass membrane protein.   |
| <b>Tissue Specificity</b>        | Expressed almost exclusively in the brain. Detected at very low levels in the peripheral tissues.   |
| <b>Function</b>                  | function:Orphan receptor. Seems to act through a G(q/11)-mediated pathway.,similarity:Belongs to the G-protein coupled receptor 1 family.,tissue specificity:Expressed almost exclusively in the brain. Detected at very low levels in the peripheral tissues.,   |
| <b>Background</b>                | This gene encodes a member of the rhodopsin family of G-protein-coupled receptors. The encoded protein is almost exclusively expressed in the central nervous system. L-tryptophan and L-phenylalanine may act as the physiologic ligands of the encoded protein. Alternative splicing results in multiple transcript variants. [provided by RefSeq, Jan 2016], |
| <b>matters needing attention</b> | Avoid repeated freezing and thawing!  |



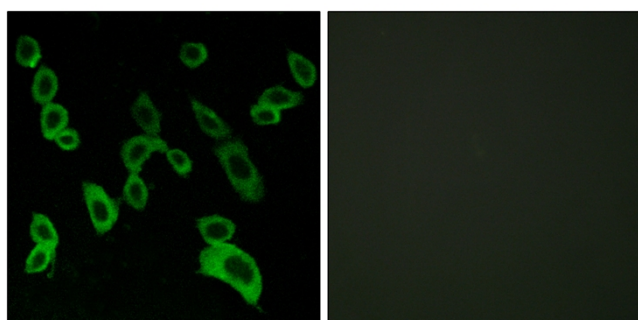
## Usage suggestions

This product can be used in immunological reaction related experiments. For more information, please consult technical personnel.

## Products Images



Western Blot analysis of K562 cells using GPR139 Polyclonal Antibody



Immunofluorescence analysis of LOVO cells, using GPR139 Antibody. The picture on the right is blocked with the synthesized peptide.